

## Installing a Legitronic Labeling Software Printer

1. Log into Windows using an account with administrative privileges.
2. Open the Printers area of Windows. (Figure 1)

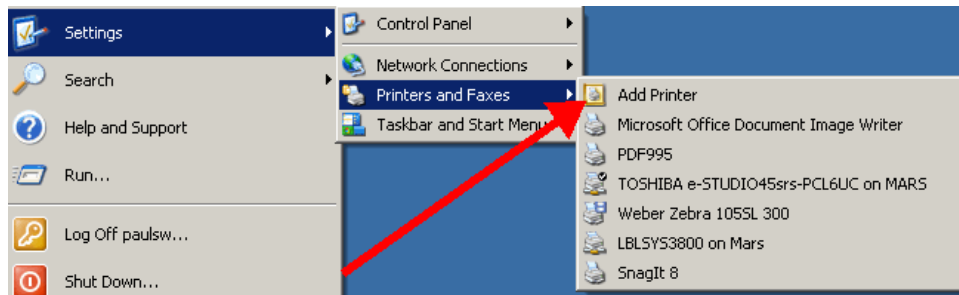


Figure 1

3. Click the Add a Printer link and follow the Add a Printer Wizard instructions. (Figure 2)



Figure 2

4. Choose the Local Printer option, but **UNCHECK** “Automatically detect and install my Plug and Play printer”. (Figure 3)

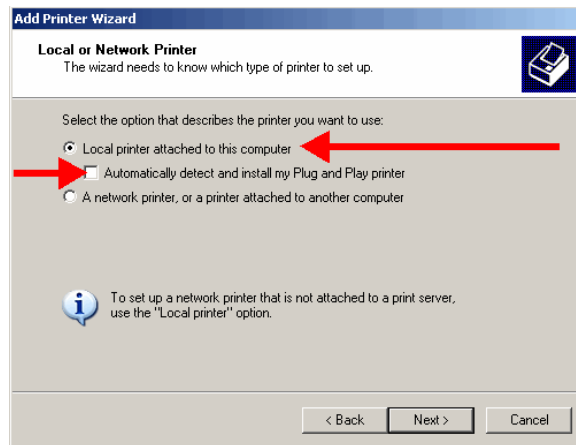


Figure 3

5. Direct the printer to the port where it is installed. (Figure 4)  
**NOTE:** If using a networked printer contact your Network Administrator.

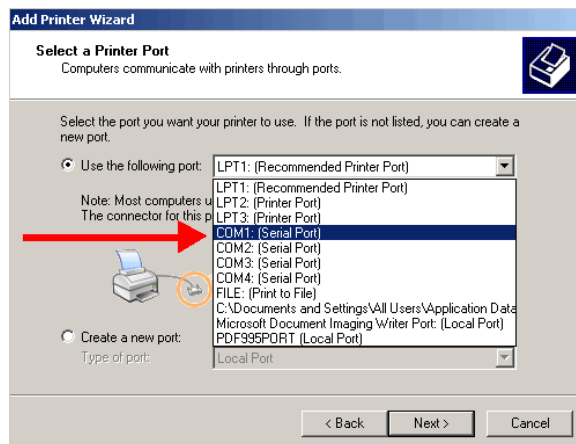


Figure 4

6. Click the Have Disk button when the list of manufacturers and printers on the Install Printer Software window comes up. (Figure 5)

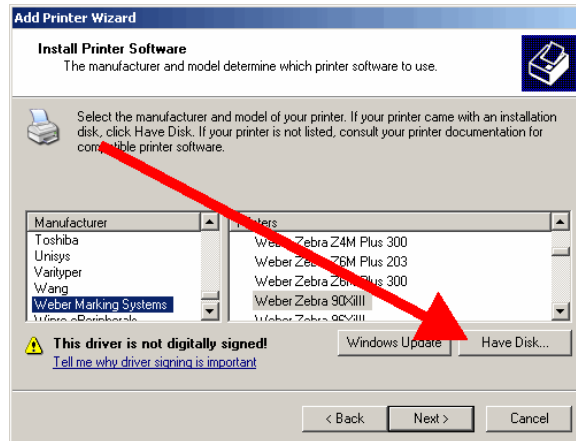


Figure 5

7. Click the Browse button on the Install from Disk window. (Figure 6)

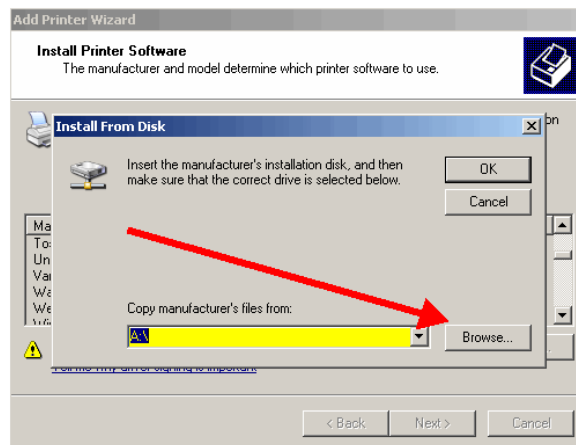


Figure 6

- Browse to C:\Program Files\Weber Marking Systems\Legitronic Labeling Software\Printer Drivers\Windows-NT-2000-XP\English folder. (Figure 7)

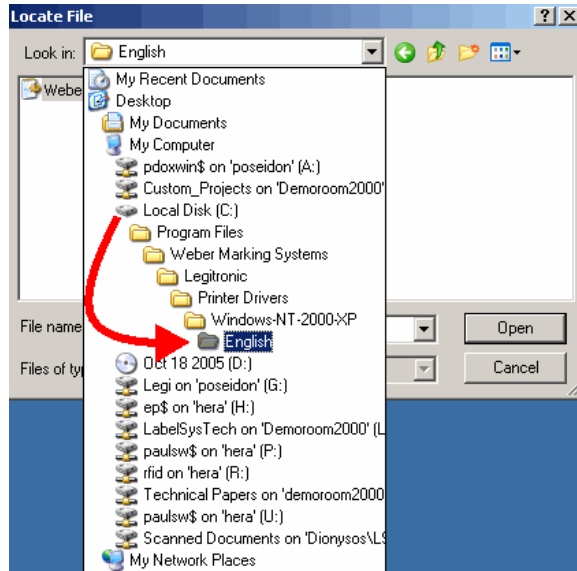


Figure 7

- Highlight WeberNT.inf and then click Open. (Figure 8)

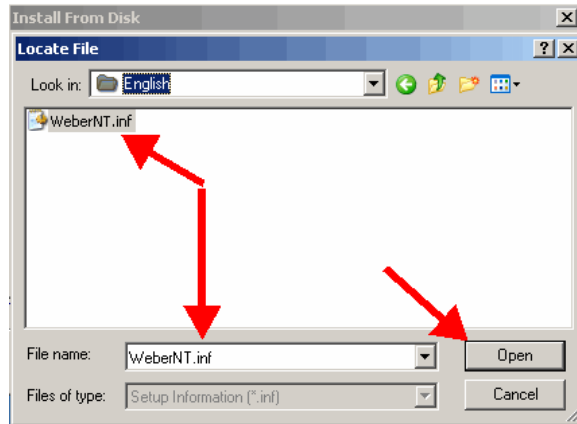


Figure 8

10. Click OK on the Install from Disk window. (Figure 9)

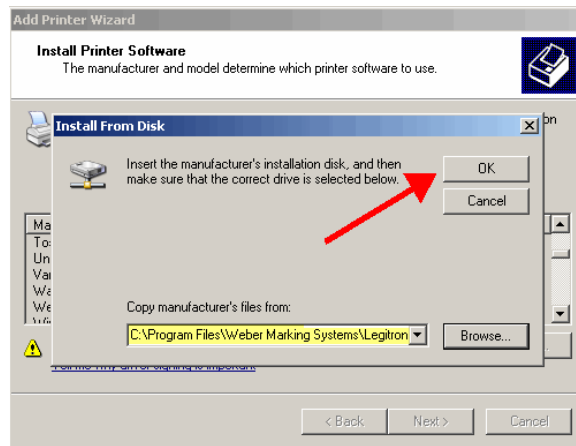


Figure 9

11. Scroll through the list of printers, highlight the model to install and click Next. (Figure 10)  
**NOTE:** If asked to replace or keep the existing driver, choose replace.

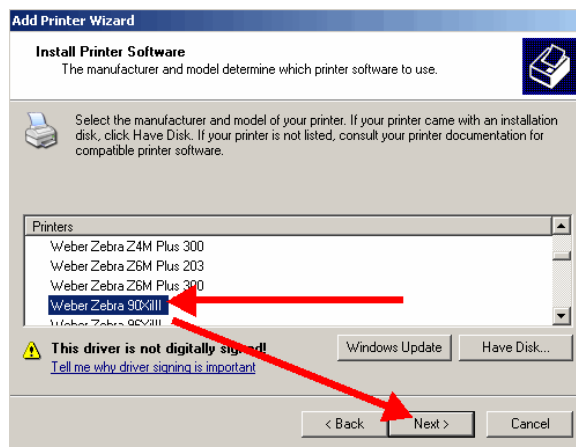


Figure 10

12. Continue through the Add a Printer Wizard.

13. Choose No to Default Printer, Share Printer and Print a Test Page. (Figure 11a, b, c)

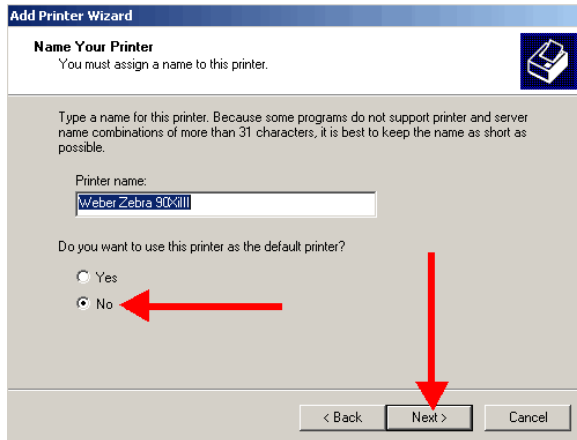


Figure 11a

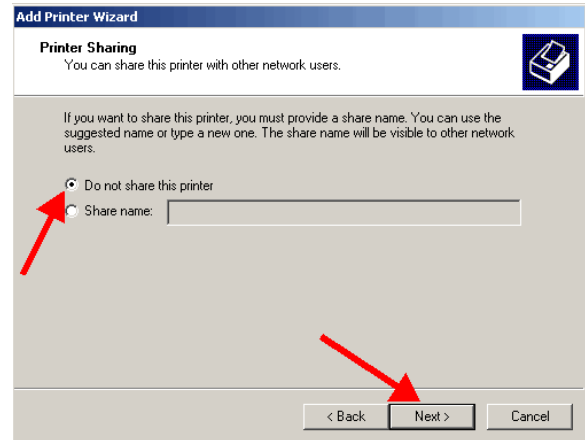


Figure 11b

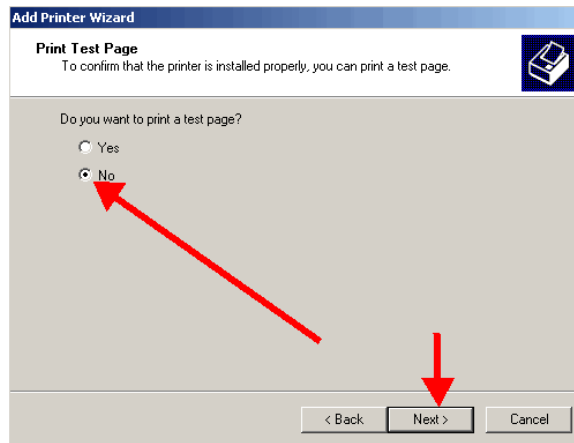


Figure 11c

14. Click Finish to complete the Add Printer Wizard. (Figure 12)

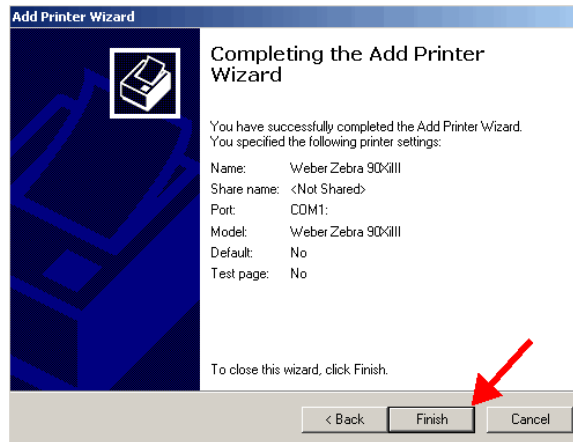


Figure 12

15. Choose Continue Anyway to the Windows Certification warning.(Figure 13)

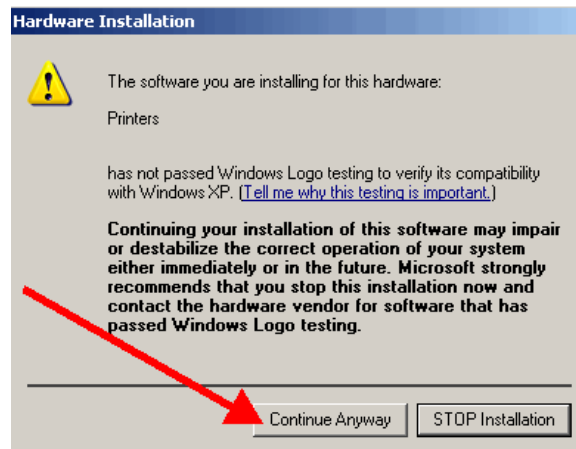


Figure 13

16. Right-click on the newly installed printer.

17. Choose Properties from the quick-pick menu. (Figure 14)

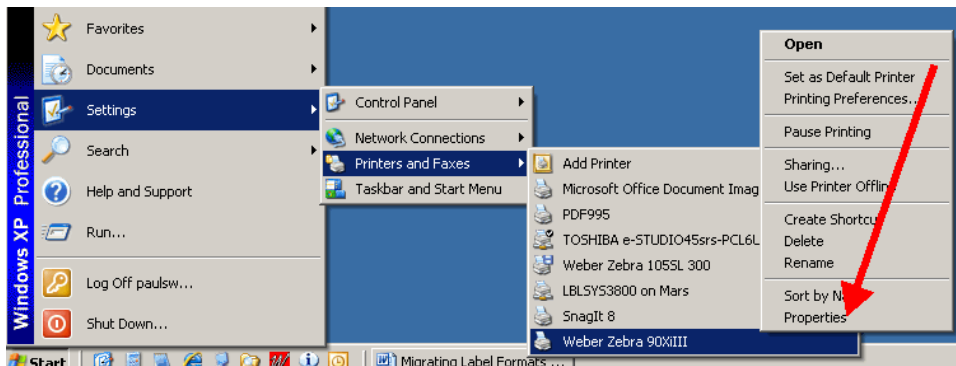


Figure 14

18. Click on the Ports tab.(Figure 15)

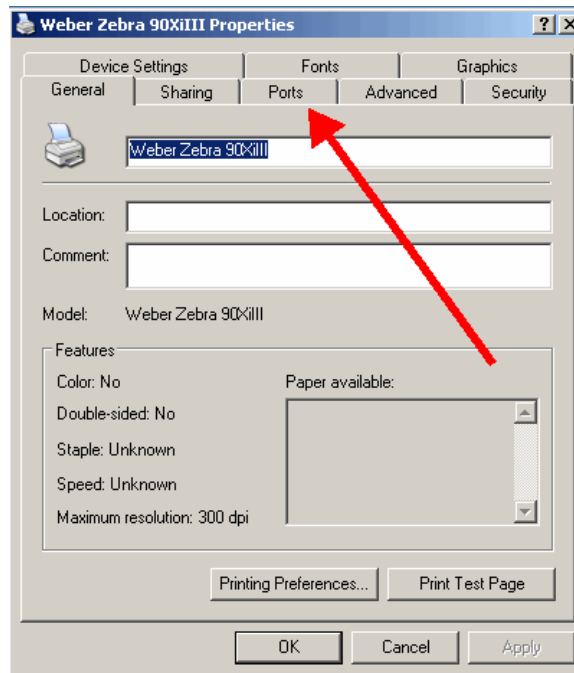


Figure 15



19. Uncheck the Enable Bidirectional Support option (near the lower left). (Figure 16)

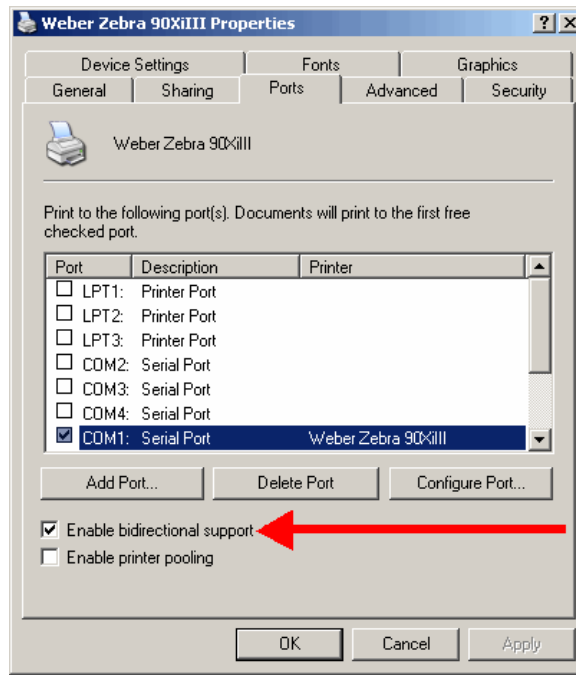


Figure 16

**NOTE:** If you need to make changes to your port settings click on the Configure Port button, (Figure 17a, b). Ask your IS department if such changes are needed. (The recommended COM1 settings are shown)

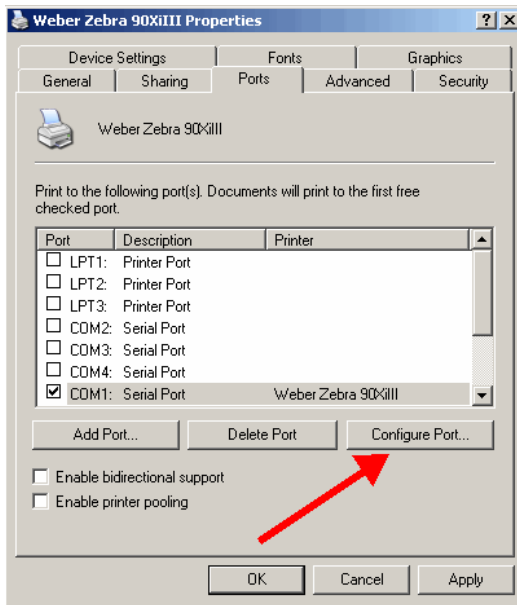


Figure 17a

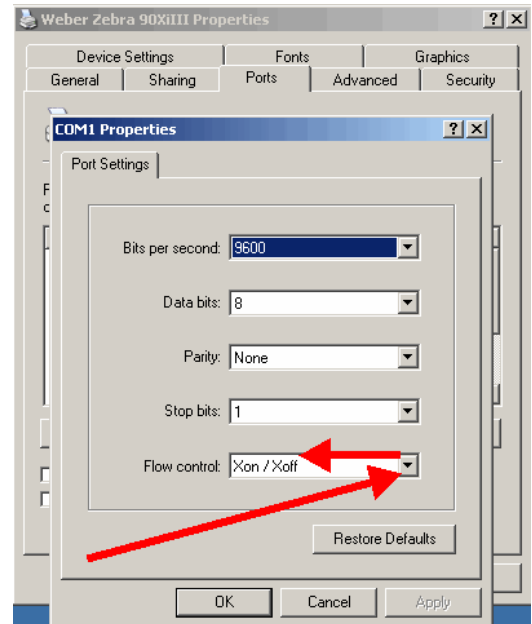


Figure 17b

20. Click on the Device Settings tab. (Figure 18)

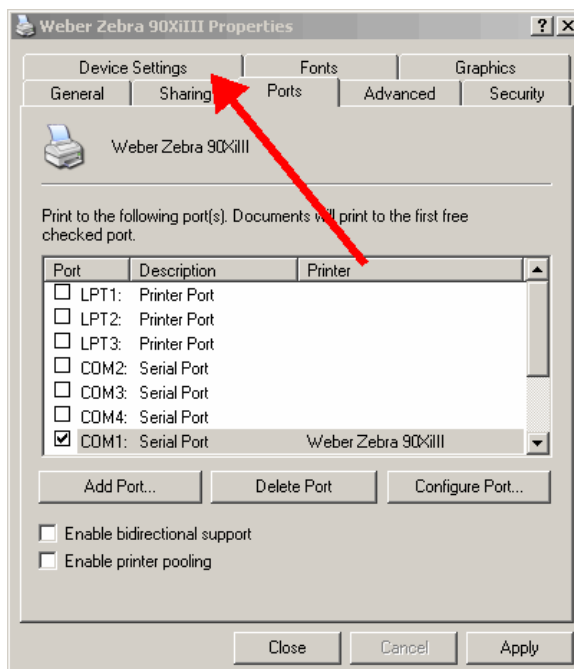


Figure 18

21. Click on the Properties button for the Setup Label Size option. (Figure 19)

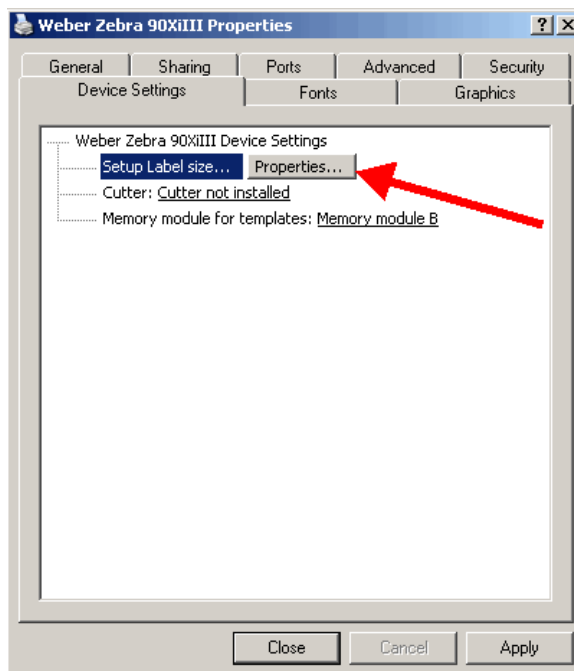


Figure 19

22. Change the label settings from the existing values to 20 inches by 20 inches, (Figure 20a, b) and click OK.

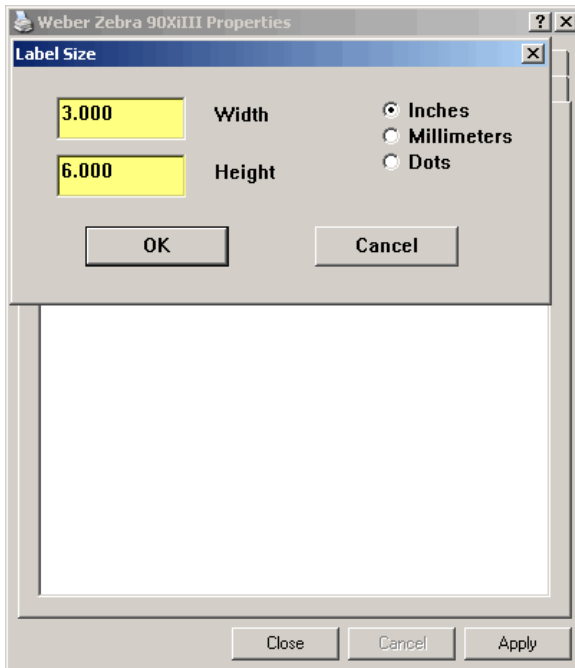


Figure 20a

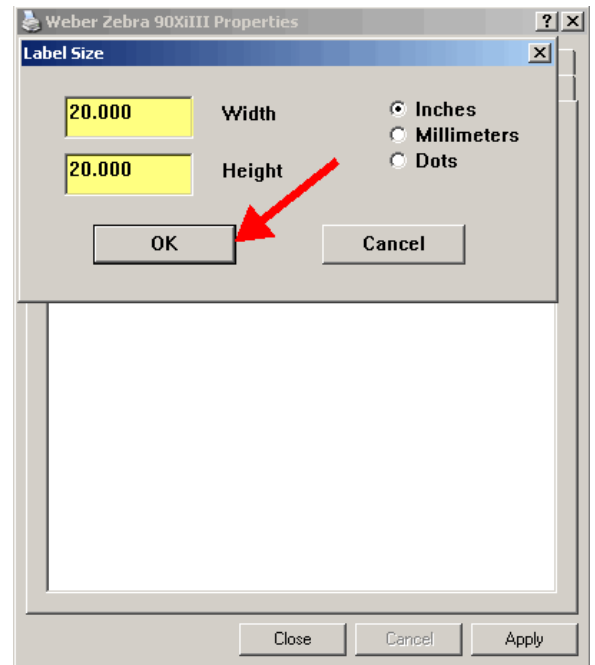


Figure 20b

23. Click Close to finish setting up your printer. (Figure 21)

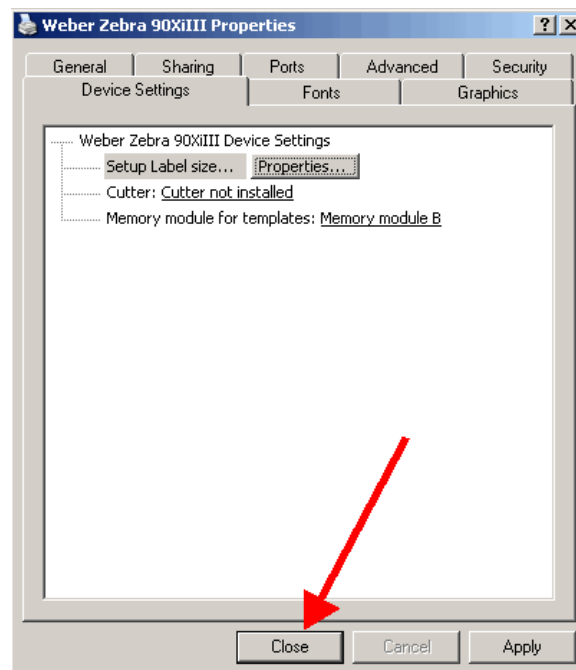


Figure 21